



UNIVERSITY
OF LATVIA

University of Latvia

Academic centre



The University of Latvia Academic Centre serves as a gateway to the future, swiftly moving towards the goal of consolidating nearly all faculties in a single location. It is an environment where talent, knowledge, and entrepreneurship collaborate and flourish.



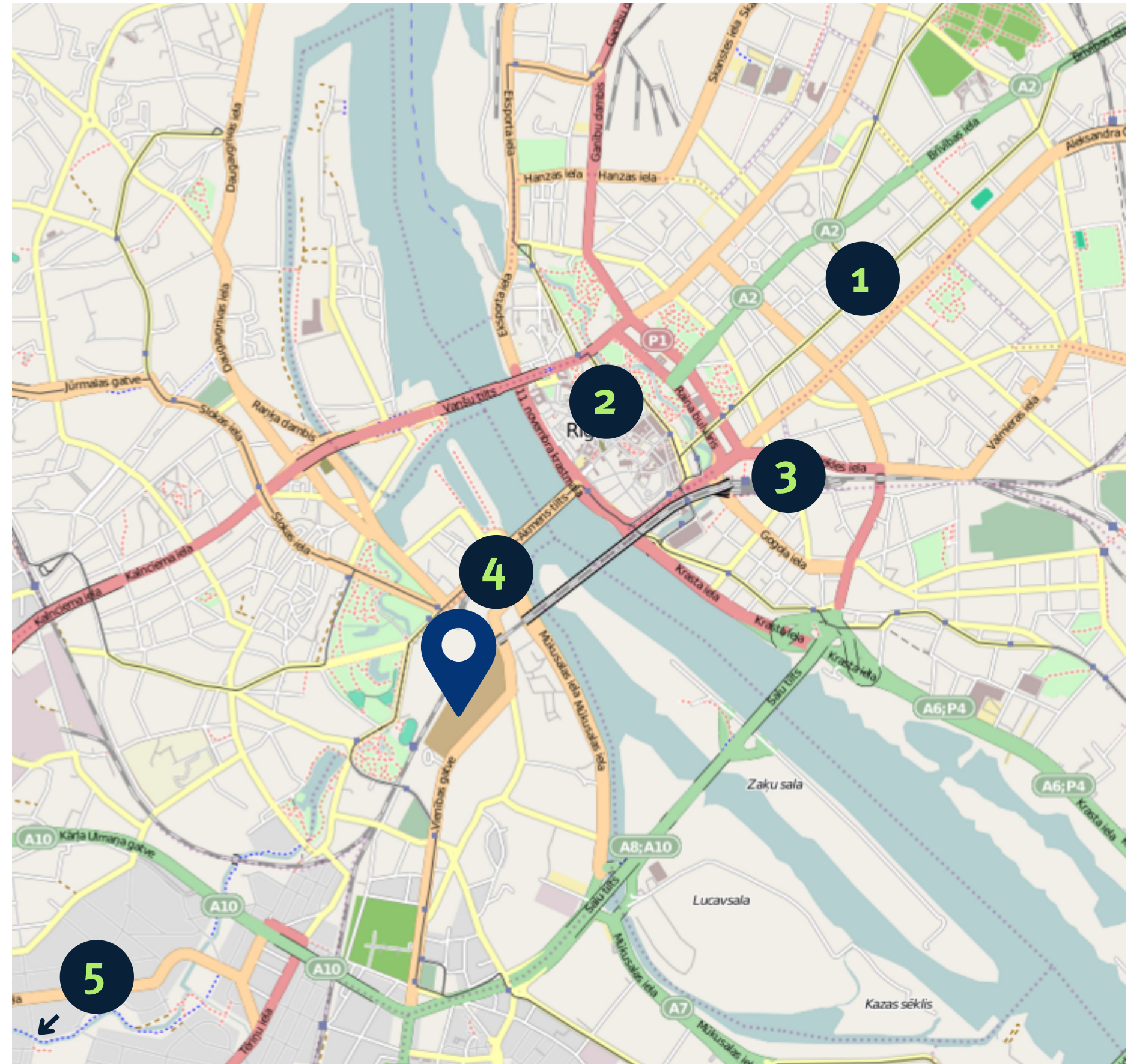
LATVIA, RIGA

Univerity of Latvia is located in the heart of Latvia and the Baltic States.



THE ACADEMIC CENTRE LOCATION IN RIGA

1. Central District
2. Old Town Riga
3. Riga Central Station
4. National Library of Latvia
5. Riga Airport (approx. 15 minutes away)





KEY POINTS NEAR THE ACADEMIC CENTER

1. Cycling road and extension
2. Jelgavas str. passway to make it wider
3. Cycling road and extension
4. Cycling tunnel under railway
5. New transit connection under railway
6. Railway station
7. Buru street connection with Raņķa dam
8. Public transport
9. Pedestrian road towards Daugava river



HOUSE OF NATURE
2015

HOUSE OF SCIENCE
2019

FUTURE DEVELOPMENT

HOUSE OF LETTERS
2025

HOUSE OF HEALTH
2027

HOUSE OF TECHNOLOGY
2029

FUTURE DEVELOPMENT

HOUSE OF SPORTS
2026

HOUSE OF STUDENTS AND GUESTS
2027

FUTURE DEVELOPMENT

UNIVERSITY OF LATVIA

The University of Latvia is the national, leading and most influential higher education institution in Latvia. In terms of the total number of students, the University of Latvia is also the largest university in the country.

* in accordance with the resolution of University Council No. 1-48/33 dated November 16, 2023, the reorganization of faculties and institutes into four larger faculties is scheduled to be completed by September 2024.



Founded in 1919



State owned
public entity



13 faculties*



17 001 students in
2022

DATA ABOUT UNIVERSITY OF LATVIA

Number of students



Place in university ranking

	2019	2020	2021	2022
PLACE, QS EECA (EMERGING EUROPE AND CENTRAL ASIA) UNIVERSITY RANKING	39	41	40	40

Foreign students

	2019	2020	2021	2022
FOREIGN STUDENTS	888	764	917	1021

Study programmes

	2019	2020	2021	2022
STUDY PROGRAMMES	148	154	156	153

Budget income

	2019	2020	2021	2022
BUDGET INCOME, M EUR	114.9	108.8	127.6	136.8

CONCEPT OF THE ACADEMIC CENTER

2004

The inception of the LU Academic Center is commenced in 2004 following the approval of the University's Development Strategy for the years 2004-2010. Furthermore, in 2010, the concept of establishing a unified study and research hub, referred to as the Academic Center, garnered support within the Senate, which endorsed the Strategic Development Plan of LU for 2010-2020.

2009

On August 11, 2009, the Cabinet of Ministers deliberated on an informative report titled "On the development of the material and technical infrastructure for studies and scientific activities at the University of Latvia." Subsequently, by decision of the Cabinet of Ministers, a plot of land at 1 Jelgava Street was allocated to UL upon approving the establishment of the Academic Center.

2012

The implementation of the initial phase of the academic center's development program commenced in 2012, marked by the initiation of a competition to solicit the best ideas for the area's development. On September 27, 2013, LU entered into a contract for the construction of the first building of the Academic Centre - the House of Nature, which was successfully completed by September 2015.



“The development of the Academic Centre will allow the university to concentrate its study and research activities and will enable effective and rational use of the infrastructure and human resources. The centre will give an impulse of development not only to the higher education in Latvia, but also to its economy, environment and culture.”

–Indriķis Muižnieks, rector of the University of Latvia

INVESTMENTS MADE (IN CUMULATIVE FORM), M EUR



HOUSE OF SPORTS

2026+



HOUSE OF HEALTH

2027+



HOUSE OF STUDENTS AND GUESTS

2027+



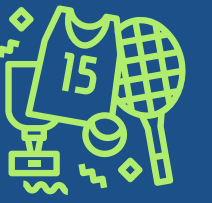
HOUSE OF TECHNOLOGY

2029+



FUTURE DEVELOPMENT

HOUSE OF SPORTS



A versatile sports complex to offer top-tier sports facilities and active recreational opportunities for students, staff of University of Latvia and nearby residents advancing the fields of sports science and sports studies.

The complex will contain:

3 sports halls of different capacities
aerobic hall
dance hall
sports laboratory
100 m running track

large swimming pool
swimming training pools
counter-current pool
family zone
gym

rehabilitation, physiotherapy and
massage center
UL sports history and achievement
museum
other common areas



Total area, m²
15 270



Jobs created
45



Visitors per day
4200



Energy consumption,
kWh/m²/year
88



Total investment expected
according to control estimations,
M EUR
40.4



Readiness level
High. Feasibility study has been made.
Technical specification prepared.

HOUSE OF HEALTH



An outpatient medical center designed to function as a hub for academic studies, scientific research, and cutting-edge healthcare delivery, emphasizing personalized (precision) care.

The center will contain:

the ambulatory clinic block
block of specialized clinics
block of teaching, science and
ambulatory consultation rooms,

short-term inpatient unit
manipulation block

simulation centre
premises for youth organisations and
social care



Total area, m2
8 100



Jobs created
65



Visitors per day
110



Energy consumption,
kWh/m2/year
88



Total investment expected
according to control estimations,
M EUR
21.7



Readiness level

Medium. The feasibility has been made. Clarifying the scope of the involvement of public partners and space program and the programme of premises.

HOUSE OF STUDENTS AND GUESTS



The student and guest house will be a new student hostel with 400 beds in the territory of the Academic Centre.

The House will host:

apartments for students and guests of the Academic centre
recreational and study amenities

premises for the student council office
area designated for a kiosk, small grocery store, or café



Total area, m²
7 715



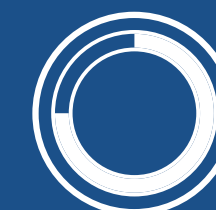
Jobs created
8



Energy consumption,
kWh/m²/year
88



Total investment expected
according to control estimations,
M EUR
21.7



Readiness level

High. Feasibility study has been made. Designated as PPP project. PPP documentation coordinated with local authorities.

HOUSE OF TECHNOLOGY



The Technology House will foster an infrastructure facilitating the commercialization of innovations originating from University of Latvia and its collaborators, including the advancement of prototypes up to TRL 6/7, alongside proactive management of intellectual property.

The centre will contain premises for:

High energy particle centre
Center of material science and
prototyping

Centre of life sciences
Technology transfer centre

All the centres will provide research
and analytical services as well as
develop production processes and
models



Total area, m²
7 700



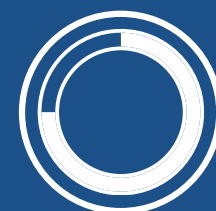
Jobs created
50



Total investment expected
according to control estimations,
M EUR
45.1



Energy consumption,
kWh/m²/year
120



Readiness level
Medium. The pre-investigation has been
conducted

Construction: **8.9**
Equipment: **86.2**

IMPROVEMENT OF TERRITORY

The University of Latvia's campus design features a cohesive educational hub combining academic, research, and adult learning centers, alongside a community sports complex. The layout forms a connected trail of spaces along a main thoroughfare, flanked by a central plaza and green zones. It's a pedestrian-friendly, verdant sanctuary incorporating a winding 'philosopher's walk', athletic tracks, and walkways that facilitate active transport and integrate with local transit. The eco-conscious 'Sponge Campus' concept smartly manages rainwater to minimize runoff.

Total area, m²

90 267

Total investment expected according
control estimations, M EUR

8

Readiness level

Medium. The territory design sketch project and the development guidelines are developed.



Commercial premises



Children care center



Technology transfer



Green energy



COMMERCIAL PREMISES

Shopping area for the needs and convenience of the residents of the Academic Center. One of the grocery store chains in the small or mini modular version.

Office premises for innovative companies, associations, state institutions .

Total area, m2: 6130

Total investment, M EUR: 10.5

Readiness level: **Low**. The concept has been formulated



CHILDREN CARE CENTER

Childcare facility catering to the children of LU students and staff members.

Total area, m2: 3000

Total investment , M EUR: 9

Readiness level: **Low**. The concept has been formulated



GREEN ENERGY

Environmentally-friendly energy solutions, encompassing solar parks, photovoltaic panels, intelligent lighting both indoors and outdoors, and the implementation of recuperation systems for the reutilization of heated water, heat pumps, and similar technologies

Total investment, M EUR : 18

Readiness level: **Medium**. The pre-investigation has been conducted

TIMELINE

Market sounding

2024

- Selection of the partner/s
- Joint decision about cooperation form & model

Feasibility studies

2024/2025

- Development of feasibility studies
- Decision of Cabinet of Ministers to allow to start the procurement

Procurement

2026

- Announcement of procurement
- Evaluation of bids

Design & construction

2027-2029

- Commission
- Maintenance (up to 2049)

INVESTMENT PROPOSAL

PROJECT	INVESTMENT AMOUNT, M EUR	COOPERATION MODEL	COOPERATION FORMS
House of Sports	40.4	DBF(O)M	PPP, rent lease, joint SPV
House of Health	21.7	DBF(O)M, consulting	PPP, rent lease, joint SPV
House of Students and Guests	21.6	DBFOM	PPP
House of Technology	45.1	DBFM, consulting	PPP, rent lease, joint SPV
Improvement of the territory	8	DBFM, consulting	PPP
Commercial premises	10.5	DBF(O)M	PPP, rent lease, joint SPV
Children care center	9	DBF(O)M	PPP, rent lease, joint SPV
Green energy	18	DBFM, consulting	PPP, joint SPV
TOTAL, M EUR	174,3		